

## **CHARTLET FOR THE ORE ENTRANCE**

Imray's chartlet for the Ore entrance follows on the next page of this PDF. It was drawn from a Trinity House survey carried out in March 2017.

We emphasise that this chartlet should be your primary pilotage aid for the entrance, rather than the necessarily general description in ECP4 which was written in late 2014.

Skippers needing any further advice on the spot can call ECP's local Honorary Port Pilot, and Orford Harbourmaster, Philip Attwood, using the details shown on the chartlet below.

Bearing lines shown on the chartlet give bearings from one buoy to the next on entry, and, as explained above, do not necessarily mark the route with the best water. Indeed, Philip's advice given in late May suggests shallowing near the Oxley buoy, the best line being direct between the Haven and Weir buoys.

East Coast Pilot

31<sup>st</sup> May 2017

[webmaster@eastcoastpilot.com](mailto:webmaster@eastcoastpilot.com)

**Caution**

This chart is not to be used for navigation. It is based on a survey made by Trinity House on 13th March 2017. Users are reminded that depths are subject to constant change and consequently this chart should be used with extreme caution as the situation is likely to be different from the one depicted on the date of the survey.

Neither Trinity House nor the publisher will accept any liability for loss, injury or damage incurred by misuse of the data in this chart. Navigators are advised to seek confirmation of the latest situation before attempting to enter the river from the ECP Honorary Port Pilot and Orford Harbourmaster Philip Attwood ☎ 07528 092635, or call *Chantry* on VHF Ch 08 (although note that he is based at Orford and may be out of radio range from the river entrance).

Soundings in metres at Lowest Astronomical Tide (LAT). Positions are referred to WGS84 datum.

**Imray Laurie Norie & Wilson Ltd.**  
[www.imray.com](http://www.imray.com)

© British Crown Copyright, 2017.

All rights reserved.



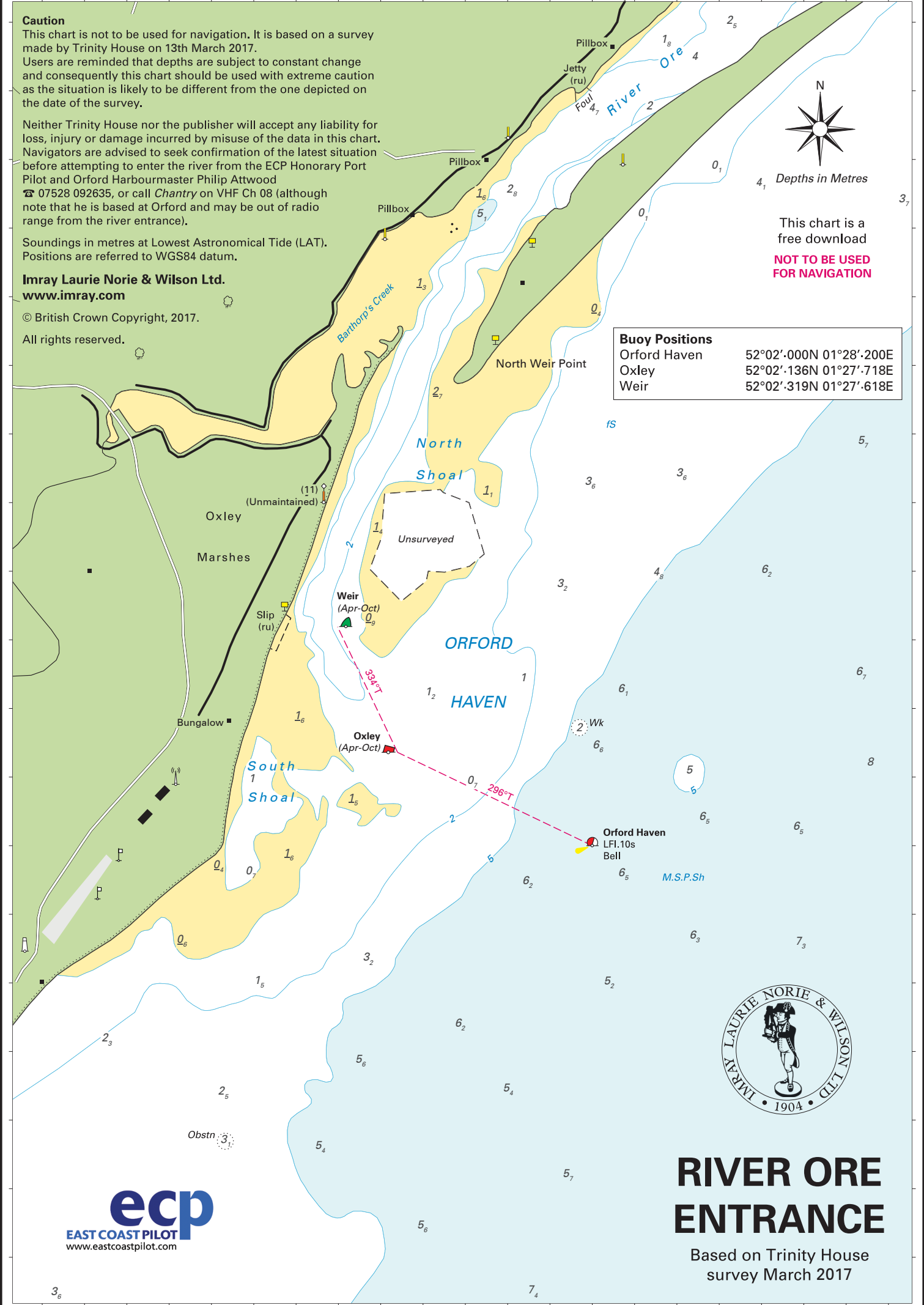
Depths in Metres

This chart is a free download

**NOT TO BE USED FOR NAVIGATION**

**Buoy Positions**

Orford Haven	52°02'.000N 01°28'.200E
Oxley	52°02'.136N 01°27'.718E
Weir	52°02'.319N 01°27'.618E



# RIVER ORE ENTRANCE

Based on Trinity House survey March 2017

