

Buoy Positions	
No. 9	51° 53.233' N 001° 15.524' E
No. 16	51° 53.175' N 001° 15.522' E
No. 11	51° 53.116' N 001° 15.522' E

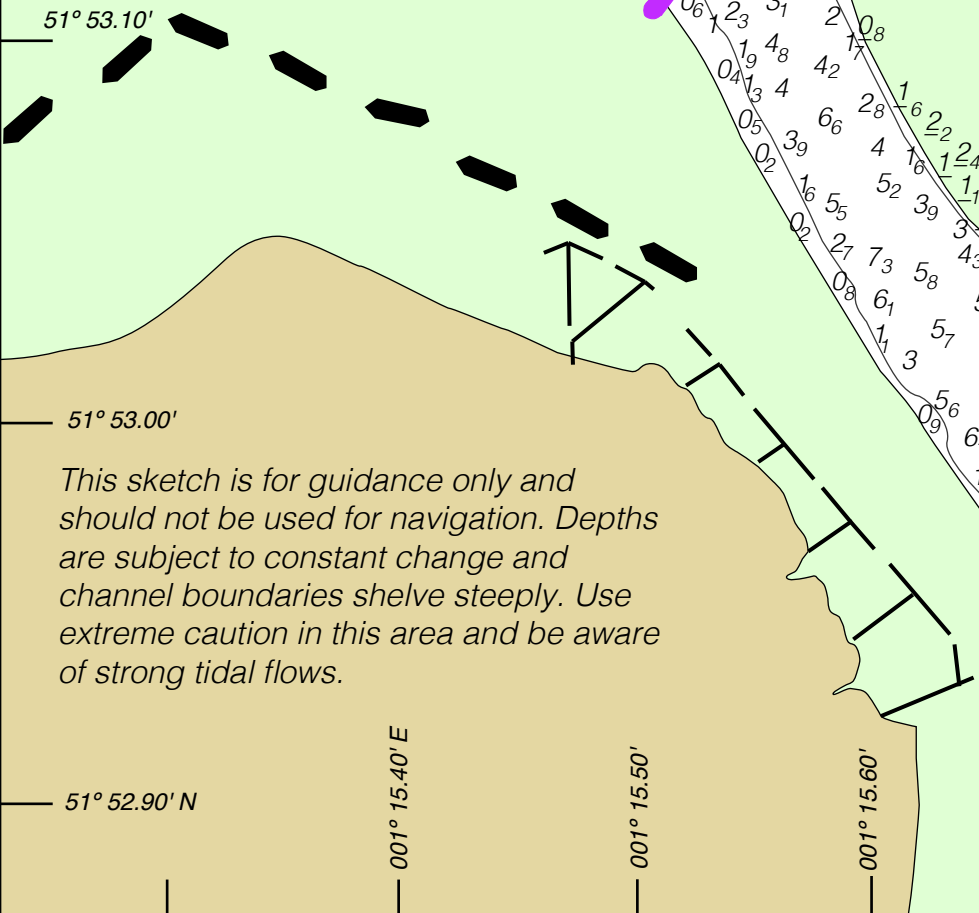
Island Point

Walton & Frinton
Yacht Club.

Stone Point 2017

Based on soundings taken
between November 2016 and
January 2017 by HARWICH
HAVEN AUTHORITY.
Approximate depths in metres
reduced to Chart Datum .

This sketch is for guidance only and
should not be used for navigation. Depths
are subject to constant change and
channel boundaries shelf steeply. Use
extreme caution in this area and be aware
of strong tidal flows.



51° 53.40'
51° 53.30'
51° 53.20'
51° 53.10'
51° 53.00'
51° 52.90' N

001° 15.40' E
001° 15.50'
001° 15.60'
001° 15.70'

No. 10
QR
No. 12
No. 14
No. 9
FIG 5s
No. 16
No. 11
FIG 10s
No. 13