

CHARTLET FOR THE ORE ENTRANCE 2021 ***PLEASE READ AND TAKE NOTE -***

Imray's first 2021 chartlet for the Ore entrance follows on the next page of this PDF.

It was produced for us in April 2021, based on the Trinity House survey carried out a few weeks earlier. We will be keen to hear of any experiences at the entrance that will add knowledge helpful to other readers.

As usual, the lines shown between buoys are simply bearing lines to assist buoy spotting, they are not recommended courses between buoys. The survey data suggests that a curving route approaching the Weir buoy should find the best water, but take care not to get too close to the South Shoal.

Initial comments we have heard suggest that the Weir buoy may need to be moved South before too long, as changes continue. It has already been moved slightly from its original charted position.

We hope to be able to add an aerial photo of the entrance to this download in the near future.

East Coast Pilot

15th April 2021

webmaster@eastcoastpilot.com

Caution

This chart is not to be used for navigation. It is based on a survey made by Trinity House on 17th March 2021. Users are reminded that depths are subject to constant change and consequently this chart should be used with extreme caution as the situation is likely to be different from the one depicted on the date of the survey.

Neither Trinity House nor the publisher will accept any liability for loss, injury or damage incurred by misuse of the data in this chart. Navigators are advised to seek confirmation of the latest situation before attempting to enter the river from the ECP Honorary Port Pilot and Orford Harbourmaster Philip Attwood ☎ 07528 092635, or call *Chantry* on VHF Ch 08 (although note that he is based at Orford and may be out of radio range from the river entrance).

Soundings in metres at Lowest Astronomical Tide (LAT). Positions are referred to WGS84 datum.

Imray Laurie Norie & Wilson Ltd.
www.imray.com

© British Crown Copyright, 2021.

All rights reserved.



52°03'N

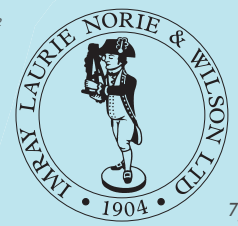
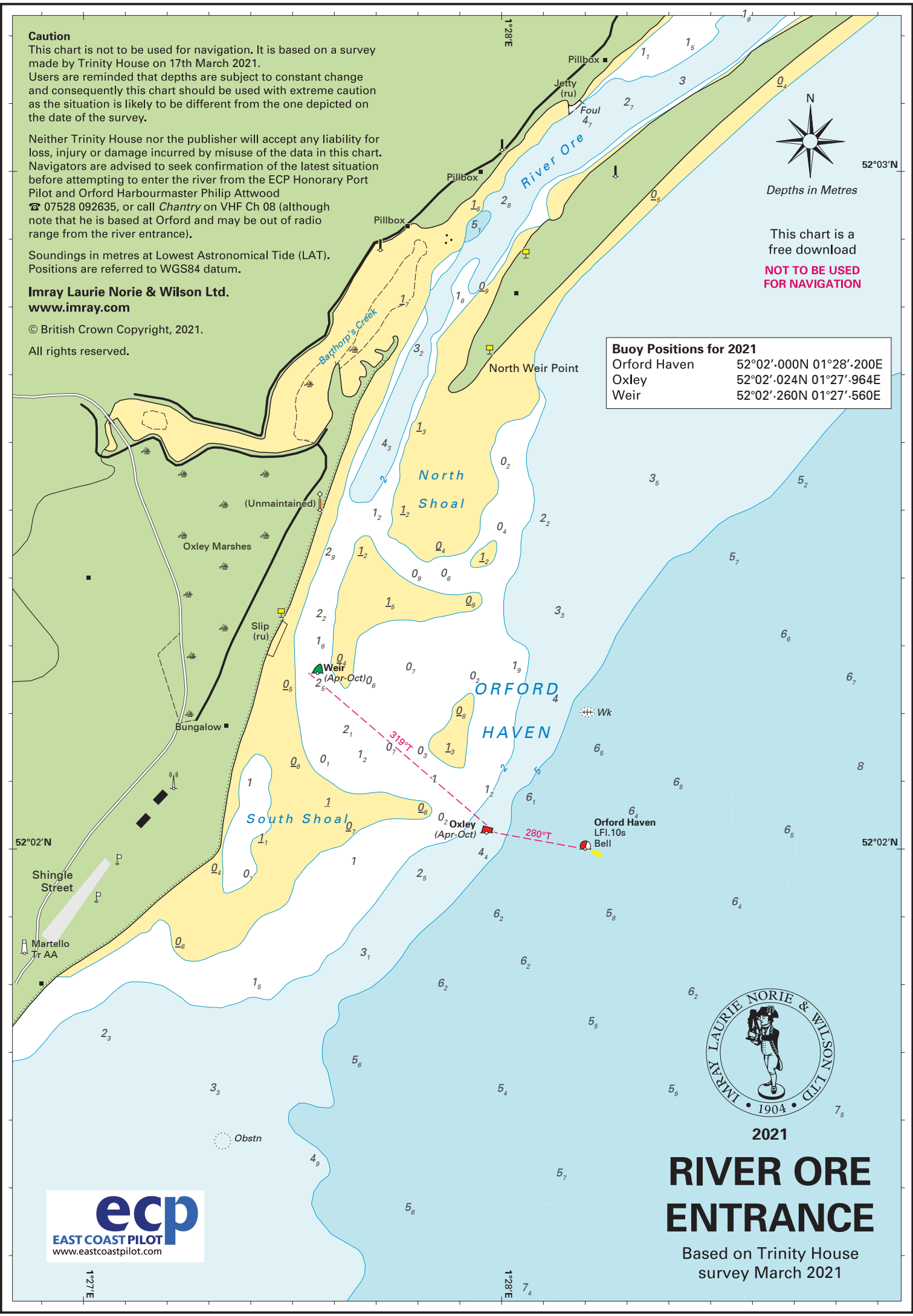
Depths in Metres

This chart is a free download

NOT TO BE USED FOR NAVIGATION

Buoy Positions for 2021

Orford Haven	52°02'.000N 01°28'.200E
Oxley	52°02'.024N 01°27'.964E
Weir	52°02'.260N 01°27'.560E



2021

RIVER ORE ENTRANCE

Based on Trinity House survey March 2021



1°27'E

1°28'E

52°02'N

52°02'N